

WARRANTY

PARISI offer a lengthy and comprehensive warranty against manufacturing defects, which is in addition to that required under Australian Consumer Law.

Please refer to our website for full warranty terms and conditions:

<https://parisi.com.au/pages/warranty-information>

THIS TAP MUST BE INSTALLED BY A LICENSED PLUMBER IN ACCORDANCE WITH LOCAL REGULATIONS

This PARISI tap is manufactured to standard AS/NZS 3718.

ELLI II BASIN MIXER

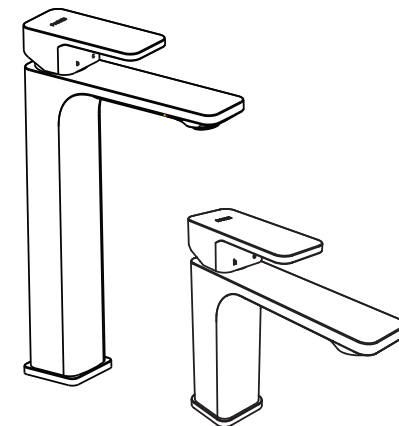
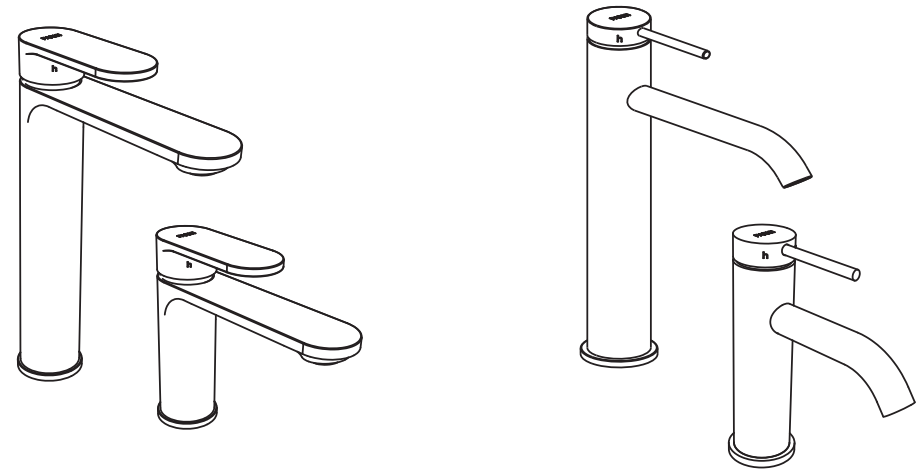
ELLI II VESSEL BASIN MIXER

ENVY II BASIN MIXER

ENVY II VESSEL BASIN MIXER

QUASAR II BASIN MIXER

QUASAR II VESSEL BASIN MIXER

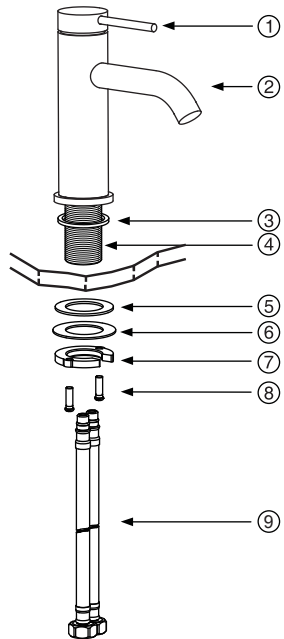


AS/NZS 3718:2005
WMK 21199



Lic. 0022

INSTALLATION



1. Screw flexible hoses (9) under the tapware body (2).
2. Insert O-ring/washer (3).
3. Insert rubber washer (5) and metal fixing plate (6) on to thread tube (4)
4. Screw lock nut (7) onto threaded tube (4) and tighten the screws (8).

*DO NOT OVERTIGHTEN

NO.	DESCRIPTION	QTY
1	HANDLE	1 PC
2	BODY	1 PC
3	O-RING/WASHER	1 PC
4	THREADED TUBE	1 PC
5	WASHER	1 PC
6	METAL FIXING PLATE	1 PC
7	LOCK NUT	1 PC
8	SCREW	2 PC
9	FLEXIBLE HOSE	2 PC

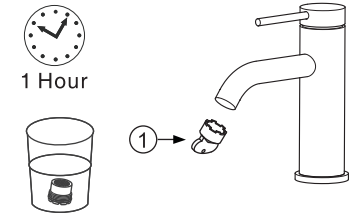
WARNING

1. Each tapware body assembly is hydraulically pressure tested at the factory. Do not attempt to dismantle the assembly yourself.
2. Before installing the tapware, flush out the water lines to ensure that the pipes are free of any dirt or debris: avoid blockages in the cartridges.
3. After installing the tapware, check all connection points or leakages. Always turn OFF water before removing or disassembling the tapware.
4. Hydraulic pressure for Parisi tapware is 50-500 kPa (including hot and cold hydraulic pressure).
5. Open tapware handle to relieve water pressure and ensure that the water is shut off completely.
6. Do not apply any undue force when using any tools, ie. Power tools NOT to be used.
7. Do not bend or squeeze the hoses.
8. Working temperature is less than 90° (80° is recommended).

MAINTENANCE

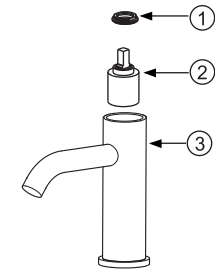
AERATOR

1. Remove the aerator by inserting the blue key (1) provided in the box. Turn clockwise.
2. Place aerator in water for 1 hour.
3. Rinse and re-assemble the aerator to spout.



CARTRIDGE

1. After removing the handle
2. Unscrew the lock nut (1)
3. Remove cartridge (2) from tapware body (3).
4. Re-assemble in reverse.



CLEANING

Constant or regular cleaning will maintain tapware lustre.

- ✓ Only use clear water to rinse and soft cotton cloth to dry. Never use abrasive products (such as cleaners, cloths, or paper) acidic detergent, harsh cleaner or soap.

✓ = Soft Cotton Cloth ✗ = Acid, Strong Detergent

In case of thick sediments proceeds as follows:

1. Clean the surface of your tapware with clear water and soft cotton cloth.
2. Use any of the following to remove the dirt:
 - ✓ Mild liquid detergent.
 - ✓ Clear liquid glass cleaner mixed according to the manufacturers directions.
 - ✓ Non-abrasive liquid polish.
3. After cleaning, rinse the tapware thoroughly again with clear water to remove the cleaner and dry it with a soft cotton cloth.

In case the water flow is reduced clean the aerator using instruction above.

