

Caroma®

Liano Invisi II

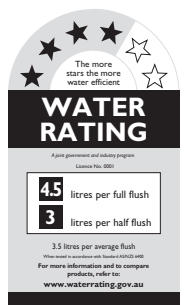
**4.5/3 litre Dual Flush Toilet Suite with
Liano Wall Faced Box Rim Vitreous China Pan
and Invisi II Cistern for Inwall, Under Counter,
Induct or Inceiling applications**



CI/SfB	(74.1)	g3
Date	April 2015	

Supersedes all previous issues

3.70.1



Caroma®

Liano Invisi II

Vitreous China 4.5/3 litre Wall Faced Back Inlet Toilet Suite



A sharp, symmetrical designed wall faced concealed toilet suite comprises the **Liano** pan and trusted Caroma **Invisi II** cistern, and is targeted for commercial applications, but is also suitable for domestic use. The pan connection system includes the patented Caroma Uni-Orbital® Connector that extends to any position in a 50mm radius, unlike traditional connectors that only move backwards and forwards. The setout range is from 60mm – 120mm with a recommended setout of 90mm. The smooth sided pan is available in both standard and easy height models with the great looking thin lid, soft close seat with quick release. Choose from a variety of buttons from the Caroma range to complete your desired look.

Pan: **Liano** back inlet 4.5 litre full flush box rim pan

Traps: Universal trap for S or P-trap installations.

Inlet: 50mm back inlet for concealed cistern and flushvalve installation.

Cisterns and Flushvalves: **Invisi II** cistern – suitable for inwall, under counter, induct and in ceiling applications. *For push button and access plate (supplied separately) options see chapter 6.15.1 CISTERNS of the Caroma Technical Manual.*

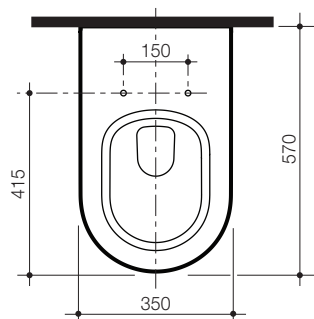
Fixing: The pan can be fixed to the floor by either bedding into mortar or using the D82 Concealed Fixing Bracket.

Seats: The **Liano** soft close toilet seat is provided as standard with the Liano suite. A quality solid section compression moulded toilet seat, fitted with buffers and metal hinges.

Colours: White only.

Installation: The installation of the toilet suite shall be in accordance with the normal minimum drainline grade requirements in AS/NZS 3500.2.

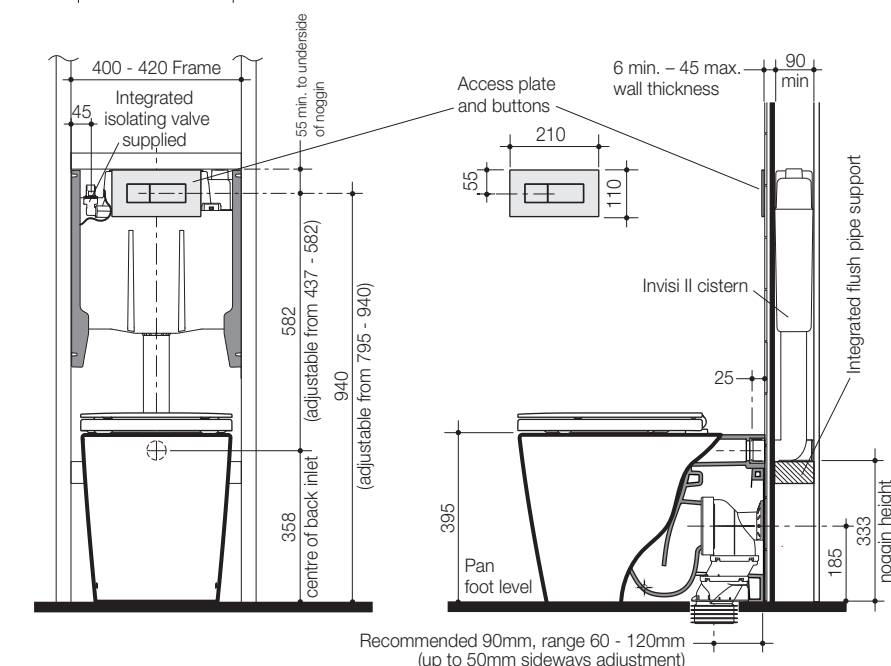
Dimensions: All dimensions are in millimetres and are subject to normal manufacturing variations. Caroma pursues a policy of continuing improvement in design and performance of its products. The right is therefore reserved to vary specifications without notice.



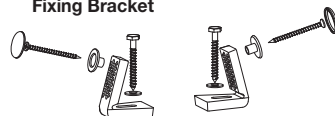
Liano Invisi II 4.5/3 litre Toilet Suite with Back Inlet Pan, Internal Overflow Cistern and Seat:

Code No.

Inwall/Under Counter/ Induct/Inceiling	766100W
Button options: see 6.15.1	



D82 Concealed Fixing Bracket



Note: All height dimensions to underside of pan, make allowance for bedding when installing.

Bedding: The pan should be fixed to the floor with a sand cement mixture of 3:1 to a depth of 60mm. Do not use lime or fast drying cement in the bedding mixture. When bedded the back of the foot of the pan should be approximately 10mm above the finished floor.

Bracket fixing: The pan should be bedded with an acetic cured silicone sealant and fixed with the D82 Fixing Brackets supplied.